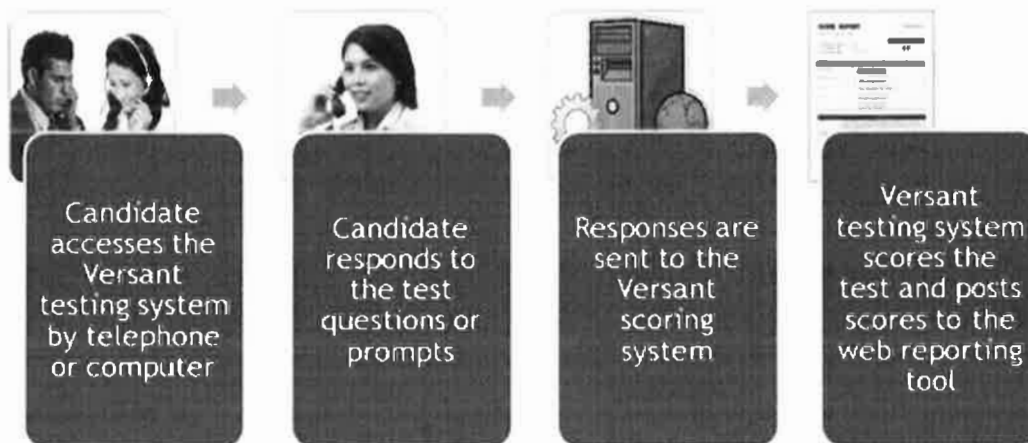


## An Easy, Secure Way to Administer Testing



Versant tests can be conveniently administered over the telephone. Instructions for the test are spoken over the testing system in an examiner voice and are also printed on the test paper during telephone administration. Test items are presented in the native speaker voice, distinct from the examiner voice.

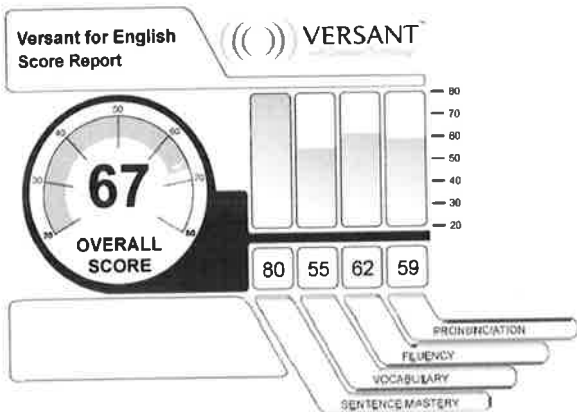
Depending on your preference, Versant tests can be supervised at your site by your staff or test takers can access and complete the test from a remote location. We offer a password-protected web system that can be used to select tests and prepare the necessary instructions for administering the tests.

### Telephone Testing

Telephone administration is supported by a test paper that includes general instructions and an introduction to the test procedures, plus instructions and information that are specific and unique to the test. Included in this unique information is the phone number to call, the Test Identification Number, the written instructions, item examples, and the printed sentences for the Reading section. When the test taker calls into the Versant testing system, the system will ask the test taker to use the telephone keypad to enter the Test Identification Number on the test paper. This identification number keeps the test taker's information secure.

An examiner voice speaks all the instructions for the test. The spoken instructions for each section are also printed on the test paper to help ensure that test takers understand the instructions. Test takers directly answer the test questions in English into the phone going through all parts of the test until they complete the test and hang up.

## Versant™



**Measure English speaking skills quickly, accurately and reliably**

**Applicants who will have frequent contact with customers | Timed - 15 minutes**

**Versant™** is a **completely automated** test of spoken English that enables you to ensure applicants and employees have the level of spoken English language skills necessary for a given job.

.....

**Competency Areas: Sentence Mastery, Vocabulary, Fluency, Pronunciation**

The score report comprises an overall score and 4 diagnostic sub-scores:

**1. Pronunciation.**

**2. Fluency.** This reflects the rhythm, phrasing and timing evident in constructing, reading and repeating sentences.

**3. Sentence Mastery.** This reflects the ability to understand, recall and produce English phrases and clauses in complete sentences.

**4. Vocabulary.** This reflects the ability to understand common everyday words spoken in sentence context and to produce such words as needed.

.....

Use Versant to screen applicants for these types of positions:

- Taxi Drivers
- Customer Service
- Technical Support
- Sales
- Cashiers

.....

Uses: Selection

Available in UK English






### Zoom in on:

- **Assess an individual's spoken English language skills objectively**
- **A test of spoken (UK) English with fair and bias-free contents**
- **Convenient, easy to use and by telephone**
- **Volume discounts available – call 0345 099 1485 for more information and to take a demo test**

# Test Instructions

## Please read this before taking the test

Versant tests are automated spoken language tests that are taken on the telephone or computer. If you would like to listen to a sample test, purchase a practice test, or view the test score after taking the test (if applicable), please visit [www.VersantTest.com](http://www.VersantTest.com)

Part	Instructions
<p><b>Before the Test</b></p>	<ul style="list-style-type: none"> <li>• Carefully read this instruction page and the test paper. You may use a dictionary or ask someone for help if there are words or sentences that you don't understand.</li> <li>• Choose a quiet location with a landline phone where you will not be interrupted during the test.</li> <li>• Do not use a cordless phone, cellular phone, or VoIP phone (e.g., Skype™ or PC-to-phone services). Newer phones are generally better than older phones. Make sure that the phone is set to tone and not pulse.</li> </ul>
<p><b>Beginning the Test</b></p>	<ul style="list-style-type: none"> <li>• To begin the test, call the phone number on the test paper using a landline push-button telephone.</li> <li>• A recorded examiner's voice will guide you through each section of the test.</li> <li>• Enter your Test Identification Number using the telephone keypad when the examiner's voice asks you to do so. This number is printed on the top right of your test paper.</li> <li>• The examiner's voice will then ask you two questions: your name, and the city and the country you are calling from. If you are speaking too loudly or too quietly, the examiner's voice will tell you.</li> <li>• The test begins when you say your name. If you hang up before you complete the test, the test cannot be graded. You cannot reuse the Test Identification Number.</li> </ul>
<p><b>During the Test</b></p>	<ul style="list-style-type: none"> <li>• Hold the phone close to your mouth as shown in the picture below.</li> </ul> <div style="display: flex; justify-content: space-around; align-items: center;"> <div style="text-align: center;">  <p><b>NO</b> Too low, too far away</p> </div> <div style="text-align: center;">  <p><b>YES</b> In front of mouth</p> </div> <div style="text-align: center;">  <p><b>YES</b> A good distance</p> </div> </div> <ul style="list-style-type: none"> <li>• Answer all questions smoothly and naturally in a clear, steady voice.</li> <li>• If you don't know the proper way to respond to a test item, you can remain silent or say, "I don't know."</li> <li>• Do not take notes or write during the test.</li> <li>• When you hear, "Thank you for completing the test", you may hang up.</li> <li>• If you wish, you may answer the optional questions at the end of the test. Your personal information will be kept anonymous.</li> </ul>



## Versant for English

Call: 0808-234-7814

Test Identification Number



**Introduction:** *Thank you for calling the Versant testing system.  
Please enter your Test Identification Number on the telephone keypad.  
Now, please say your name.  
Now, please follow the instructions for Part A through to Part E.*

**Part A: Reading.** *Please read the sentences as you are instructed.*

1. Jane is not happy in her current home because it's too small.
2. She wants a place with more room and more light.
3. Jane recently got a promotion at her job.
4. She can now afford a larger place.
5. We will be ordering supplies for next month on Monday.
6. If you need something, please fill out a request form by Monday morning.
7. Please check the catalogue and get the item number.
8. And don't forget to let me know how many you need.
9. Playing an instrument takes a great deal of practice.
10. You wouldn't dream of asking a beginner to play solo in a concert.
11. Yet some people never get very good.
12. They memorise pieces and like to play, but nobody wants to listen.

**Part B: Repeat.** *Please repeat each sentence that you hear.*

Example: a voice says, "The show was a tremendous success."  
and you say, "The show was a tremendous success."

**Part C: Questions.** *Now, please just give a simple answer to the questions.*

Example: a voice says, "Would you get water from a bottle or a newspaper?"  
and you say, "a bottle" or "from a bottle".

**Part D: Sentence Builds.** *Now, please rearrange the word groups into a sentence.*

Example: a voice says, "was reading" ... "my mother" ... "her favourite magazine"  
and you say, "My mother was reading her favourite magazine."

**Part E: Open Questions.** *You will have 40 seconds to answer each of two questions. The questions will be about family life or personal choices. Each question will be spoken twice, followed by a beep. When you hear the beep, you will have 40 seconds to answer the question. At the end of the 40 seconds, another beep will signal the end of the time you have to answer.*

**PEARSON**

Versant for English - 52 - 96801 - 1

© 2013 Pearson Education, Inc. or its affiliate(s). All rights reserved.  
Ordinate and Versant are trademarks, in the U.S. and/or other  
countries, of Pearson Education, Inc. or its affiliate(s).

Expires: 2016/3/26



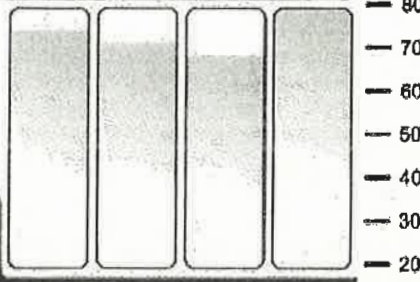
English

See All Score Ranges

**Versant for English  
Score Report**



TOTAL  
OF 56  
MIN.



75    72    69    80

Test Identification Number:

Administration Date:

PRONUNCIATION

FLUENCY

VOCABULARY

SENTENCE MASTERY

**Overall (75)**

The Overall Score of the test represents the ability to understand spoken English and speak it intelligibly at a native-like conversational pace on everyday topics. Scores are based on a weighted combination of four diagnostic subscores. Scores are reported in the range from 20 to 80.

**72 - 80** Test-taker speaks and understands effortlessly at native-speaker speeds, and can contribute readily to a native-paced discussion at length, maintaining the colloquial flow. Speech is completely fluent and intelligible; test-taker has consistent mastery of complex language structures.

**Sentence Mastery (75)**

Sentence Mastery reflects the ability to understand, recall and produce English phrases and clauses in complete sentences. Performance depends on accurate syntactic processing and appropriate usage of words, phrases and clauses in meaningful sentence structures.

**72 - 80** Test-taker can understand, recall and produce a wide range of English phrases and clauses in sentence context. Test-taker can consistently produce accurate and meaningful complex sentences.

**Vocabulary (72)**

Vocabulary reflects the ability to understand common everyday words spoken in sentence context and to produce such words as needed. Performance depends on familiarity with the form and meaning of everyday words and their use in connected speech.

**69 - 80** Test-taker understands and produces a wide range of everyday English words as they are used in fluent colloquial speech.

**Fluency (69)**

Fluency reflects the rhythm, phrasing and timing evident in constructing, reading and repeating sentences.

**56 - 74** Test-taker speaks with acceptable rhythm and generally appropriate phrasing; some units may be too fast or too slow. Occasional hesitation, repetition, and/or imperfect word-linking may produce an uneven phrasing.

**Pronunciation (80)**



# SCORE REPORT



## Versant English Test

**Test Identification Number:** 12345678  
**Test Completion Date:** January 1, 2014  
**Test Completion Time:** 1:23 PM (UTC)

OVERALL SCORE
<b>48</b>

SKILL AREA	SCORE	20	30	40	50	60	70	80	
Overall Score	48								
Sentence Mastery	48								
Vocabulary	53								
Fluency	48								
Pronunciation	45								

	DESCRIPTION
Overall	The Overall Score of the test represents the ability to understand spoken English and speak it intelligibly at a native-like conversational pace on everyday topics. Scores are based on a weighted combination of four diagnostic subscores. Scores are reported in the range from 20 to 80.
Candidate's Capabilities	Candidate can handle many utterances using a variety of words and structures, and can follow and sometimes participate in a native-paced conversation. Pronunciation is mostly intelligible; candidate can express some composite information on familiar topics to a cooperative listener.

© 2014 Pearson Education, Inc. or its affiliate(s). All rights reserved. Ordinate and Versant are trademarks, in the U.S. and/or other countries, of Pearson Education, Inc. or its affiliate(s). Other names may be the trademarks of their respective owners.

For more information, visit us online at [www.VersantTest.com](http://www.VersantTest.com)



1/5

# SCORE REPORT



Test Identification Number: 12345678

## EXPLANATION OF SUBSKILL SCORES

SKILL AREA	UNDERSTANDING THE SKILLS	CURRENT CAPABILITIES
Sentence Mastery	Sentence Mastery reflects the ability to understand, recall and produce English phrases and clauses in complete sentences. Performance depends on accurate syntactic processing and appropriate usage of words, phrases and clauses in meaningful sentence structures.	Candidate can understand, recall and produce many English phrases and clauses in sentence context. Candidate produces a range of meaningful sentences.
Vocabulary	Vocabulary reflects the ability to understand common everyday words spoken in sentence context and to produce such words as needed. Performance depends on familiarity with the form and meaning of everyday words and their use in connected speech.	Candidate usually understands and can produce everyday English words when they are used in clear speech.
Fluency	Fluency reflects the rhythm, phrasing and timing evident in constructing, reading and repeating sentences.	Candidate speaks with uneven or staccato pacing, although speech may contain some smooth runs containing several words. Frequent obvious pauses result in an irregular speech rate and some disconnected phrases.
Pronunciation	Pronunciation reflects the ability to produce consonants, vowels and stress in a native-like manner in sentence context. Performance depends on knowledge of the phonological structure of everyday words.	Candidate consistently pronounces certain consonants and vowels in a non-native manner. Stress may be placed incorrectly in some words, or stress placement may be ambiguous. Speech is mostly intelligible, but many listeners will need to adjust to the accent.

# SCORE REPORT



Test Identification Number: 12345678

## DETAILED DESCRIPTION OF LANGUAGE CAPABILITIES

This section allows users to form an idea of the spoken language tasks and interactions that average candidates scoring above a certain Versant English Test score are likely to be able to do. This information is based on the results of a study in which experienced raters listened to and rated candidates responding to the variety of prompts implemented in the Versant English Test, including responses to open questions that ask for personal opinions and views on different issues.

The score interpretations are based on large samples of speakers representing 22 languages from East Asia, the Middle East, South America, and from both Eastern and Western European countries. Male and female speakers were equally represented, and the age of candidates ranged from 12 to 65 with an average age of 25.

The section refers to the Common European Framework of Reference for Languages (Council of Europe, 2001). Descriptors from this publication were used by the raters while listening to candidates' performances and deciding on their levels of competence.

The information presented in this section is based on the average ratings of large samples of candidates. It refers to the average candidate; individual candidates may perform at a slightly higher or lower level than indicated in this guide. (See "Current Capabilities" on pages 1 and 2 for your personal results.)

SKILL AREA	A CANDIDATE WITH THIS OVERALL SCORE TYPICALLY:
Listening	<ul style="list-style-type: none"><li>• Can understand straightforward factual information about common everyday or job-related topics, identifying both general messages and specific details, provided speech is clearly articulated in a generally familiar accent.</li><li>• Can generally follow the main points of extended discussion around him/her, provided speech is clearly articulated in standard dialect.</li><li>• Can understand the information content of the majority of recorded or broadcast audio material on topics of personal interest delivered in clear standard speech.</li></ul>
Speak Production	<ul style="list-style-type: none"><li>• Can give straightforward descriptions on a variety of familiar subjects within his/her field of interest.</li><li>• Can describe dreams, hopes, and ambitions.</li><li>• Can describe events, real or imagined.</li><li>• Can briefly give reasons and explanations for opinions, plans, and actions.</li></ul>
Spoken Interaction	<ul style="list-style-type: none"><li>• Can communicate with some confidence on familiar routine and nonroutine matters related to his/her interests and professional field.</li><li>• Can express thoughts on more abstract, cultural topics such as films, books, music, etc.</li><li>• Can follow clearly articulated speech directed at him/her in everyday conversation, though will sometimes have to ask for repetition of particular words and phrases.</li><li>• Can enter unprepared into conversations on familiar topics.</li><li>• Can follow much of what is said around him/her on general topics and topics related to his/her field provided interlocutors avoid very idiomatic usage and articulate clearly.</li><li>• Can follow what is said, though he/she may occasionally have to ask for repetition or clarification if the other people's talk is rapid or extended.</li></ul>



# SCORE REPORT



Test Identification Number: 12345678

SKILL AREA	A CANDIDATE WITH THIS OVERALL SCORE TYPICALLY:
Language Quality	<ul style="list-style-type: none"><li>• Has enough language to get by, with sufficient vocabulary to express him/herself with some hesitation and circumlocutions on topics such as family, hobbies and interests, work, travel, and current events, but lexical limitations cause repetition and even difficulty with formulation at times.</li><li>• Shows good control of elementary vocabulary but major errors still occur when expressing more complex thoughts or handling unfamiliar topics and situations.</li><li>• Pronunciation is clearly intelligible even if a foreign accent is sometimes evident and occasional mispronunciations occur.</li><li>• Can link a series of shorter, discrete simple elements into a connected, linear sequence of points.</li><li>• Can express the main point he/she wants to make comprehensibly.</li></ul>
Strategies & Skills	<ul style="list-style-type: none"><li>• Can identify unfamiliar words from the context on topics related to his/her field and interests.</li><li>• Can repeat back part of what someone has said to confirm mutual understanding and help keep the development of ideas on course.</li><li>• Can ask someone to clarify or elaborate what he/she has just said.</li><li>• Can work out how to communicate the main point(s) he/she wants to get across, exploiting any resources available and limiting the message to what he/she can recall or find the means to express.</li><li>• Can convey meaning by qualifying a word meaning something similar (e.g., a truck for people = bus).</li></ul>

## TO IMPROVE, A CANDIDATE AT THIS LEVEL SHOULD:

- Practice listening to conversations or presentations likely to be encountered in social, professional, or academic life and identifying speaker viewpoints and attitudes as well as the information content.
- Practice keeping up with language spoken at a normal speed by watching and summarizing TV news and current affairs programs, documentaries, live interviews, talk shows, plays, and films.
- Practice providing clear, detailed descriptions on a wide range of subjects related to your field of interest.
- Practice explaining a viewpoint on a topical issue giving the advantages and disadvantages of various options.
- Practice delivering announcements or talks on general topics, departing spontaneously from the prepared text as needed and following up on interesting points raised by friends or classmates.
- Practice communicating spontaneously with good grammatical control, being careful to adopt a level of formality appropriate to the circumstances.
- Actively participate in conversations to practice language use on a wide range of general, academic, vocational, or leisure topics.
- Practice conveying degrees of emotion and highlighting the personal significance of events and experiences.
- Practice identifying arguments supporting and opposing points of view while listening to an animated discussion.
- Expand your repertoire of vocabulary items and phrases to be able to avoid frequent repetition, broadening your range of stock phrases (e.g., "I mean...", "That is to say...", "Let me think about that...") to gain time and keep the turn while formulating what to say.
- Focus on developing a clear pronunciation and intonation.
- Practice using a variety of linking words efficiently to mark clearly the relationships between ideas.

# SCORE REPORT



Test Identification Number: 12345678

## RELATIONSHIP TO OTHER SCORES AND LEVELS

Research has been conducted to explore how a Versant English Test overall score relates to other scales that measure or describe language proficiency. Note that the corresponding scores or levels provided are based on the relationships observed in our studies; the information does not guarantee a score on other tests or in other evaluations.

TEST/SCALE	SCORE/RANGE
GSE	<p>Corresponding GSE score:</p> <p><b>45</b></p> <p>The Global Scale of English (GSE) is reported on a scale from 10 to 90. The GSE has been aligned to the Common European Framework of Reference for Languages and provides a common, empirically validated equivalence for Pearson tests measuring English ability.</p>
CEFR	<p>Corresponding level in the Common European Framework of Reference (CEFR):</p> <p><b>B1 – Independent User</b></p> <p>CEF-R global-level descriptor: Can understand the main points of clear standard input on familiar matters regularly encountered in work, school, leisure, etc. Can deal with most situations likely to arise while traveling in an area where the language is spoken. Can produce simple connected text on topics which are familiar or of a personal interest. Can describe experiences and events, dreams, hopes &amp; ambitions and briefly give reasons and explanations for opinions and plans.</p>
TOEFL Speaking	<p>Corresponding TOEFL iBT Speaking score range:</p> <p><b>16 - 21</b></p> <p>The TOEFL iBT Speaking subscore is drawn from performance on the Speaking section of the TOEFL. Candidates perform six tasks where they receive written and aural input and respond in a single, long turn. TOEFL iBT Speaking responses receive a 0 - 4 rating and are then converted to a 0 - 30 scale.</p>
TOEFL Total	<p>Corresponding TOEFL iBT Total score range:</p> <p><b>61 - 89</b></p> <p>The TOEFL iBT Total score is drawn from performance on four sections (Reading, Listening, Speaking, and Writing). It is claimed that the TOEFL assesses the academic language domain drawing on authentic university materials and tasks. TOEFL iBT Total scores are reported on a 0 - 120 scale.</p>
TOEIC	<p>Corresponding TOEIC score range:</p> <p><b>719 - 762</b></p> <p>The TOEIC Listening and Reading test is a paper-and-pencil, multiple-choice assessment that elicits responses in two sections (Listening and Reading). It is claimed that the TOEIC measures the everyday English skills of people working in an international environment. TOEIC total scores are reported on a 10 - 990 scale.</p>

NOTE: The Versant English Test and other tests/scales address different constructs of language proficiency. Therefore, predictions are approximate. More information about these concordance studies is available upon request.

5/5

<b>PROFICIENT USER</b>	C2	Can understand with ease virtually everything heard or read. Can summarise information from different spoken and written sources, reconstructing arguments and accounts in a coherent presentation. Can express him/herself spontaneously, very fluently and precisely, differentiating finer shades of meaning even in more complex situations.
	C1	Can understand a wide range of demanding, longer texts, and recognise implicit meaning. Can express him/herself fluently and spontaneously without much obvious searching for expressions. Can use language flexibly and effectively for social, academic and professional purposes. Can produce clear, well-structured, detailed text on complex subjects, showing controlled use of organisational patterns, connectors and cohesive devices.
<b>INDEPENDENT USER</b>	B2	Can understand the main ideas of complex text on both concrete and abstract topics, including technical discussions in his/her field of specialisation. Can interact with a degree of fluency and spontaneity that makes regular interaction with native speakers quite possible without strain for either party. Can produce clear, detailed text on a wide range of subjects and explain a viewpoint on a topical issue giving the advantages and disadvantages of various options.
	B1	Can understand the main points of clear standard input on familiar matters regularly encountered in work, school, leisure, etc. Can deal with most situations likely to arise whilst travelling in an area where the language is spoken. Can produce simple connected text on topics which are familiar or of personal interest. Can describe experiences and events, dreams, hopes & ambitions and briefly give reasons and explanations for opinions and plans.
<b>BASIC USER</b>	A2	Can understand sentences and frequently used expressions related to areas of most immediate relevance (e.g. very basic personal and family information, shopping, local geography, employment). Can communicate in simple and routine tasks requiring a simple and direct exchange of information on familiar and routine matters. Can describe in simple terms aspects of his/her background, immediate environment and matters in areas of immediate need.
	A1	Can understand and use familiar everyday expressions and very basic phrases aimed at the satisfaction of needs of a concrete type. Can introduce

him/herself and others and can ask and answer questions about personal details such as where he/she lives, people he/she knows and things he/she has. Can interact in a simple way provided the other person talks slowly and clearly and is prepared to help.

## Other standards approximately equivalent to CEFR B2 \*

### English

- IELTS: 5-6.5 (5 is borderline between B1 and B2)
- TOEFL: 87 to 109
- TOEIC: 400-485 (listening), 385-450 (reading)
- City and Guilds: Communicator
- Cambridge Exam: CAE (45 to 59) / FCE grade B or C / PET Pass with Distinction
- **British general qualifications: GCE A-Level (known as A2)**

The screenshot shows the Pearson Versant website interface. The main content area is titled 'Your Batches' and displays a table of test batches. The table has the following columns: Batch, Test Type, Name, Number of Tests, Used Tests, Valid Period, and Score Access. The data rows are as follows:

Batch	Test Type	Name	Number of Tests	Used Tests	Valid Period	Score Access
120110 <a href="#">Link to Batch</a>	Versant for English	SALLY MACDONALD 06/03/16	6	<a href="#">View Summary</a>	05/03/16 - 05/03/16	<input type="checkbox"/> Locked
123456 <a href="#">Link to Batch</a>	Versant for English	Mr Ross HM	5	<a href="#">View Summary</a>	07/03/17 - 07/03/18	<input type="checkbox"/> Locked
111234 <a href="#">Link to Batch</a>	Versant for English	Debbie banda 1/6/16	8	<a href="#">View Summary</a>	01/09/16 - 01/09/17	<input type="checkbox"/> Locked
107024 <a href="#">Link to Batch</a>	Versant for English	Wendy Hill 18/06/16	8	<a href="#">View Summary</a>	18/06/16 - 18/06/17	<input type="checkbox"/> Locked
90891 <a href="#">Link to Batch</a>	Versant for English	Ross HM 26/03/2015	10	<a href="#">View Summary</a>	26/03/15 - 26/03/18	<input type="checkbox"/> Locked
82879 <a href="#">Link to Batch</a>	Versant for English	Ross HM 06/03/14	24	<a href="#">View Summary</a>	06/03/14 - 06/03/15	<input type="checkbox"/> Locked

© 2016 Pearson Education, Inc. or its affiliate(s). All rights reserved. Versant and Versant are trademarks in the U.S. and/or other countries of Pearson Education, Inc. or its affiliate(s). Other names may be the trademarks of their respective owners. [Data Terms of Use](#)